



43 Abinger Drive

, Lordswood, ME5 8UL

Guide Price £280,000



VIRTUAL TOUR AVAILABLE

MMS are delighted to offer for sale this immaculately presented two bedroom house in Lordswood. The current owners have maintained the property to an extremely high standard and internal viewings are highly recommended. Upon entering via the convenient porch, modern tiled flooring runs through the hallway and fitted kitchen. where you will find contemporary high gloss units with contrasting work tops. A good size lounge is open to a lovely conservatory with space to dine and over looks the rear garden. To the first floor there are two DOUBLE bedrooms and a well presented family bathroom. Externally the rear garden is mostly lawn with a lovely patio area. There is also a front lawn with pathway leading to front door. Additional benefits include a single garage with drive for one car, gas central heating and double glazed windows. Lordswood is a part of Chatham Kent and possesses pockets of woodland, shops, and a health centre, schools, local bus route and has good access to the M2/A2 & M20. EPC rating C. COUNCIL TAX BAND B

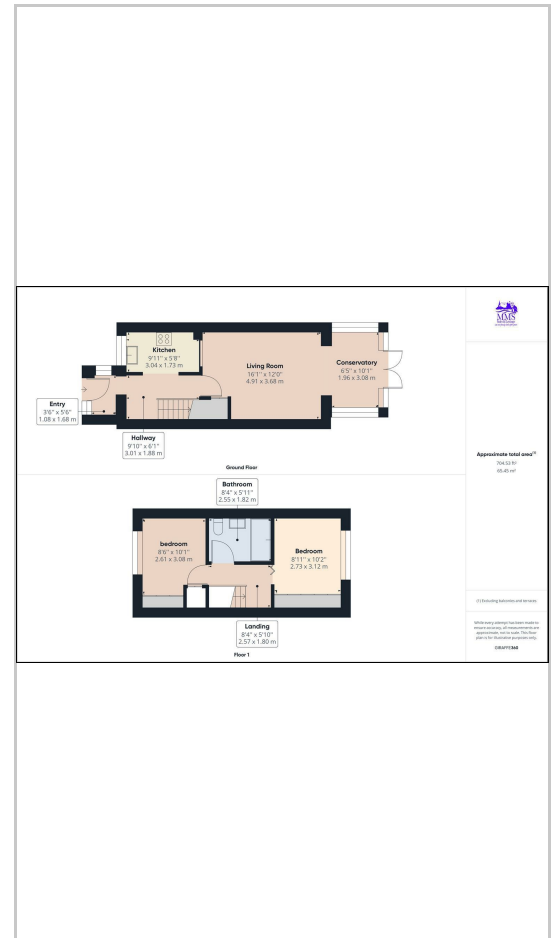


- entrance
- hallway
- kitchen
- lounge
- conservatory
- stairs/landing
- bedroom 1
- bedroom 2
- bathroom
- rear garden
- front garden
- garage
- drive

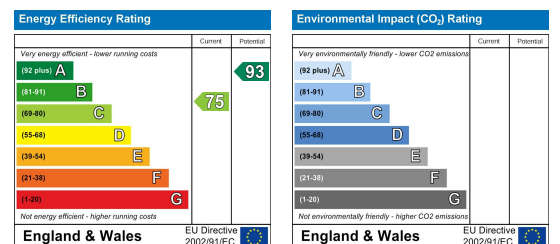
Area Map



Floor Plans



Energy Efficiency Graph



These particulars, whilst believed to be accurate are set out as a general outline only for guidance and do not constitute any part of an offer or contract. Intending purchasers should not rely on them as statements of representation of fact, but must satisfy themselves by inspection or otherwise as to their accuracy. No person in this firm's employment has the authority to make or give any representation or warranty in respect of the property.

159 High Street, Strood, Rochester, Kent, ME2 4TH

Tel: 01634 735335 Email: justine@medwaymortgageshop.co.uk <https://www.medwaymortgageshop.co.uk>